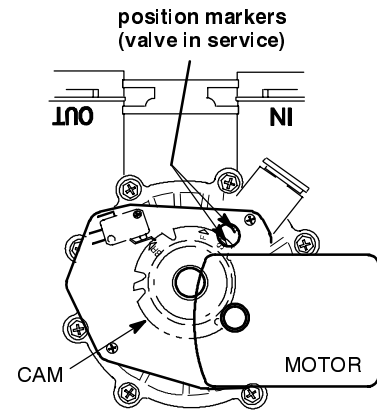


TIMER (PWA) REPLACEMENT

IMPORTANT: BE SURE THE VALVE CAM INDICATES “SERVICE” POSITION WHEN REPLACING THE TIMER (PWA), TO ASSURE BOTH VALVE AND TIMER ARE ORIENTED, OR TIMED, TO THE SAME CYCLE. If the valve is not in service position, see step 4 below.

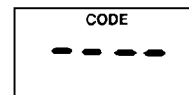
CAUTION: When installing the timer (PWA) on the faceplate, use care not to twist the circuit board, or force it onto the mounting pegs. Twisting could damage the printed circuits, or break the LED glass.

After installing the timer (PWA) and plugging in the transformer, set the code number as follows.





MODEL NOS. 625.388100, 625.388150, 625.388160 and 625.75112

When the transformer is plugged in, a test number (example: J1.0) shows in the display for a few seconds, followed by a flashing “SR22” or “- - - -”. **Set the correct number for your softener as follows.**



NOTE: If “SR22” or “- - - -” is not flashing, press and hold the SELECT button until the display shows.

1. Press the UP  or DOWN  button until the correct model code shows, as needed for your model softener.

MODEL NOS. 625.388100,
625.388150 and 625.75112



MODEL NO. 625.388160



2. Press SELECT to display a flashing 12:00 AM.



3. Program the timer following instructions in your owners manual, and on the underside of the salt tank cover.

4. If the valve is not in SERVICE position (see IMPORTANT, above), press the ON/OFF - HOLD button and **hold** for 3 seconds to start a recharge. The softener cycles through the recharge positions for the next 2 hours. After the 2 hours, the timer and valve are properly oriented together.

NOTE TO SERVICE TECHNICIAN: To save time, use the manual advance procedures to properly time and check operation...see Servicer’s Tech Information in the owners manual.