

ROTOR SEAL KIT INSTALLATION INSTRUCTIONS

Note: Before attempting to service the valve, turn off the water supply to the unit by pushing the bypass valve stem in for bypass (**Figure 1**) and unplug transformer from electrical power.

1. Loosen 3 hex head screws toward the backside of the valve, allowing pressure to bleed out. Catch this water with a rag.
2. Disassemble valve. To remove parts refer to the valve drawing. A Phillips screwdriver or nut driver and pliers are the only tools needed to disassemble the valve.
3. Remove old o-rings, rotor disc, seals, drain seal, drain plug and wave washer.
4. Be sure all parts are in place and in the proper position. Lubricate new o-rings and seals with the included tube of silicone grease.
5. Install rotor seal, place the seal into the valve groove, rounded side down (**see cross section in Figure 2**). Apply a light coating of silicone grease to the seals' crossing ribs. Then carefully center the wear strip on the seal, and push it down onto the seal.
6. Install the nozzle and venturi seal, new spring, drain plug and drain seal.
7. Slide the wave washer and the two o-rings onto the top of the rotor shaft.
8. Center the rotor into the valve body, on the rotor seal.
9. Lower the valve cover onto the valve body. Then install the cover screws. Before tightening screws, install the valve cam and gear. Then, turn the rotor (**clockwise only**) to the soft water position.
10. Tighten the valve cover screws using a criss-cross pattern. If using a torque wrench, torque to 30 inch pounds.
11. Lubricate the gear on the motor and the cam & gear with Molycote grease or other high quality gear lubricant. Be sure to orient the switch as **shown in Figure 2**, with the lever toward the cam.
12. Slowly move the bypass valve stem towards the soft water position, pausing several times to allow the system to pressurize.
13. Plug the transformer into the electrical outlet.
14. To verify proper function of the softener, complete the manual advance diagnostics as outlined in the **Installation/Operation manual**.

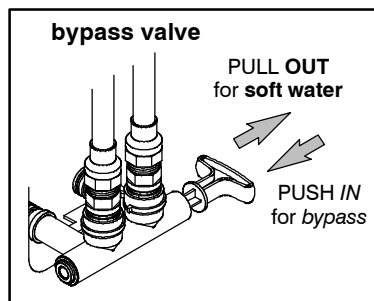


Figure 1

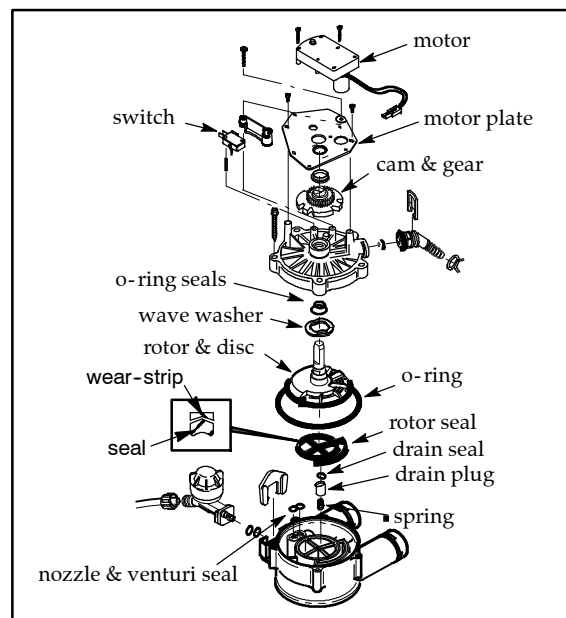


Figure 2